

DRIVE DECISIONS WITH DATA

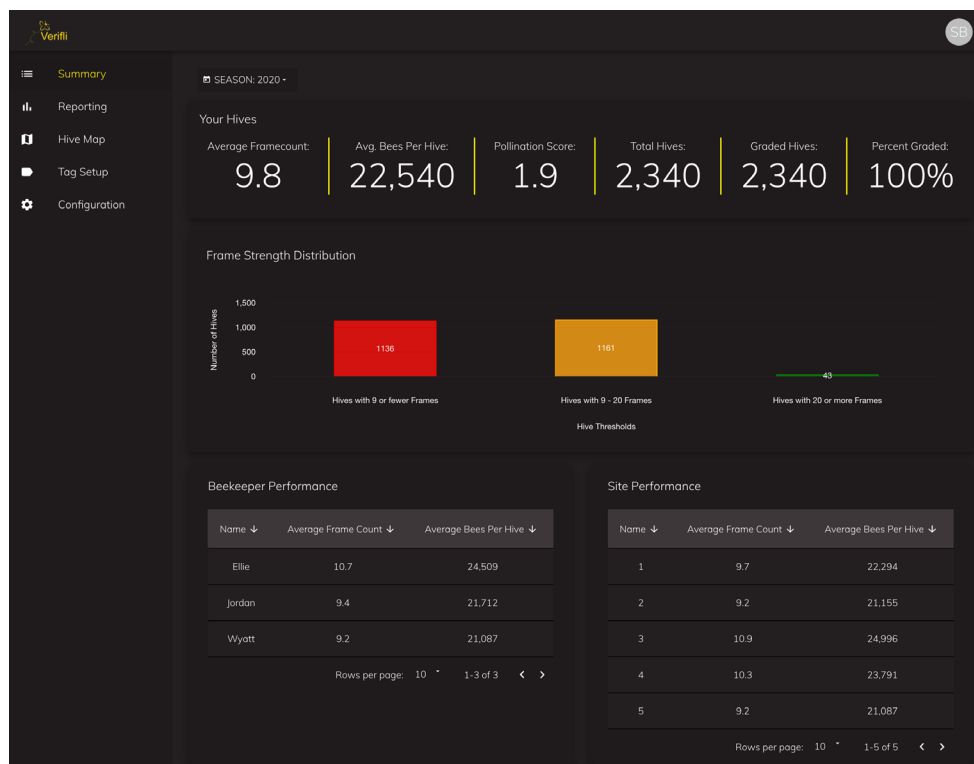


HOW TO READ MY VERIFLI DASHBOARD DATA

Visit your Verifli dashboard to view your frame strength trends, distributions, comparisons, maps and specific hive information — all in one place.

SUMMARY

- Overall Average Frame Count
- Overall Average Bees Per Hive
- Total Hives Graded
- Overall Frame Distribution
 - Hover over the columns to see how many hives fell into each strength classification
- Overall Beekeeper Performance
 - Sort highest to lowest frame count and average number of bees per beekeeper using the **arrows next to the column headers**
- Overall Site Performance
 - Sort highest to lowest frame count and average number of bees per site using the **arrows next to the column headers**



What to use this page for

This page offers high-level results on overall hive strength across all your sites and beekeepers. To view your results in greater detail, head to the Reporting page.

REPORTING

- Bee Flight hours
- Relative Humidity
- Pollination Score
 - Custom formula that takes your hive strength results and the daily weather forecast to estimate the quality of pollination you should expect to see
 - Range of 1-5

1

**immediate
intervention
needed**

2

**intervention
strongly
advised**

3

**no
intervention
necessary**

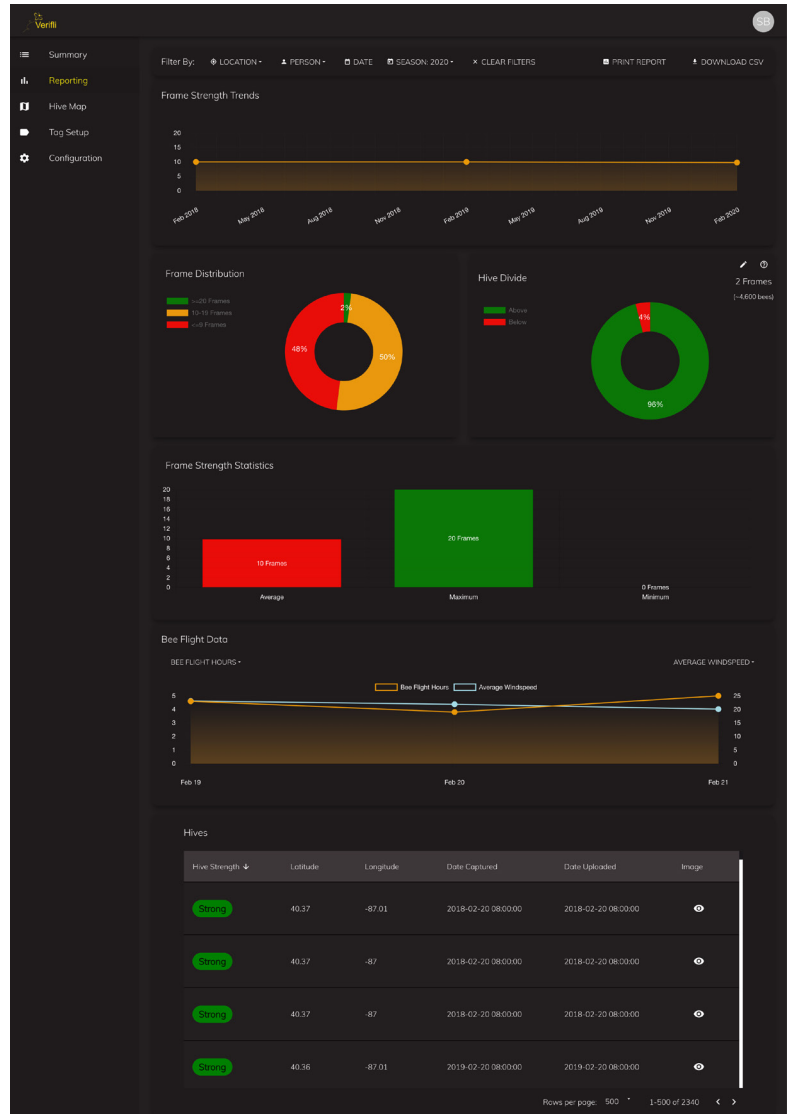
4

**excellent
pollination
conditions**

5

**optimal
pollination
conditions**

- Frame Strength Trends
 - Use the **Filter By** function above the graph to customize by location, person, data or season
 - Hover over points on the graph to see more details
- Frame Distribution
 - Hover over the chart to see what percent of hives fell into each classification
- Hive Divide
 - Set a goal hive strength by clicking the **pen icon** on the top right and selecting a frame strength
 - Hover over the chart to see what percent of your hives were above or below your goal strength
- Frame Strength Statistics
 - Hover to see what your average frame count and number of bees was as well as your strongest and weakest hives
- Hives
 - See individual data captured for each hive and where it was located
 - Use the arrow next to **Hive Strength column header** to sort strongest to weakest or weakest to strongest
 - Click the **eye icon** in the right column to see the image that was captured of that hive
- Print Report and Download CSV
 - Use these prompts to create custom reports. Use the filters to select the data to include in the report, then click **Print Report** or Download CSV for a simple excel file. Example: To create a report showing only one beekeeper's hives, use the filter tool to select that beekeeper, then create your report

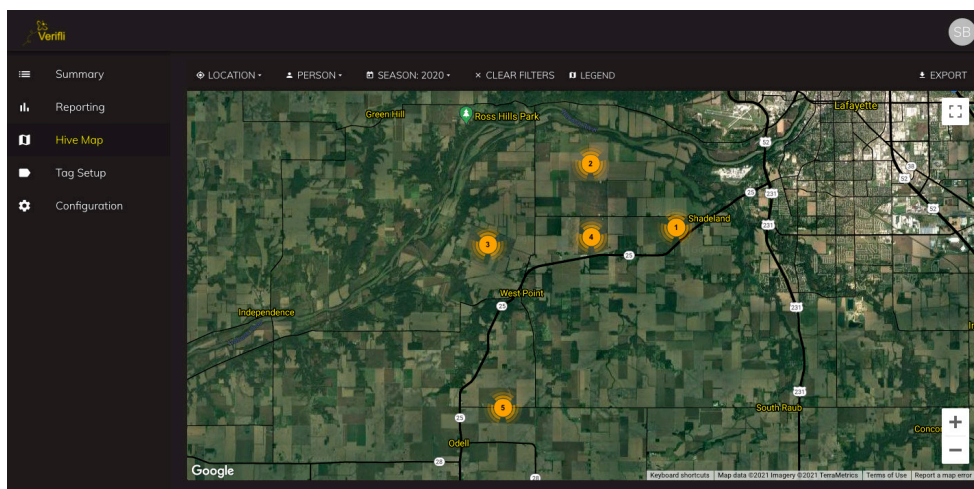


What to use this page for

This page allows you to sort data and dive into details on specific sites, beekeepers, dates and more. You can use this page to compare performance of different beekeepers and view results at different sites. To get a bird's-eye-view of your results, visit the Hive Map page.

HIVE MAP

- Map of hive locations
 - Use the filters above the map to sort by location, person and season
 - Site number is shown inside the yellow icon
 - Click on any site to zoom in and see each drop's frame strength
 - Click on any hive to see number of hives, average frame count and average bees per hive for each drop

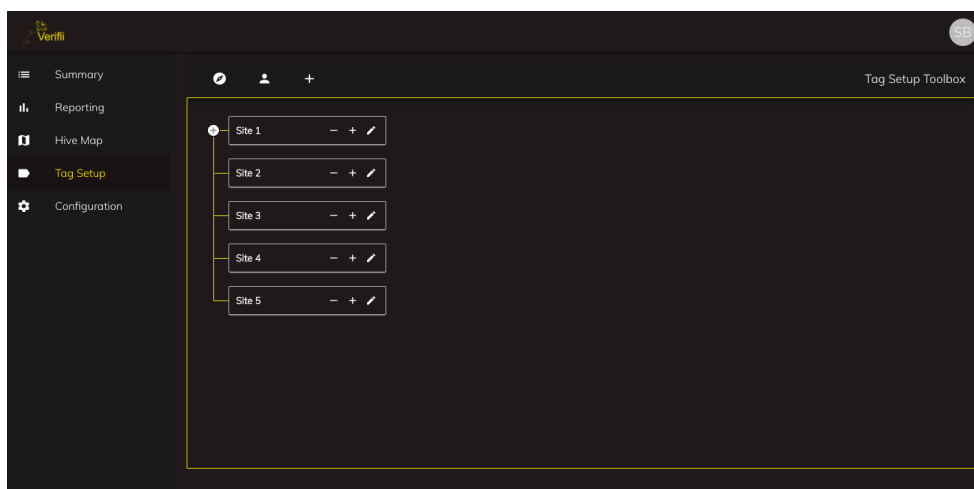


What to use this page for

This page allows you to quickly identify sites with below-average bees. Zoom in to a site to view where the hives were graded in your orchard and pinpoint the location of weak hives. If you need to order more bees or tell your beekeeper to replace weak hives, use this page to quickly determine which sites or hive drops to prioritize.

TAG SETUP

- Current Tag Settings
 - Our team will configure your image tags prior to grading your hives
 - If you'd like to change any tags, please let us know and we'll take care of it



What to use this page for

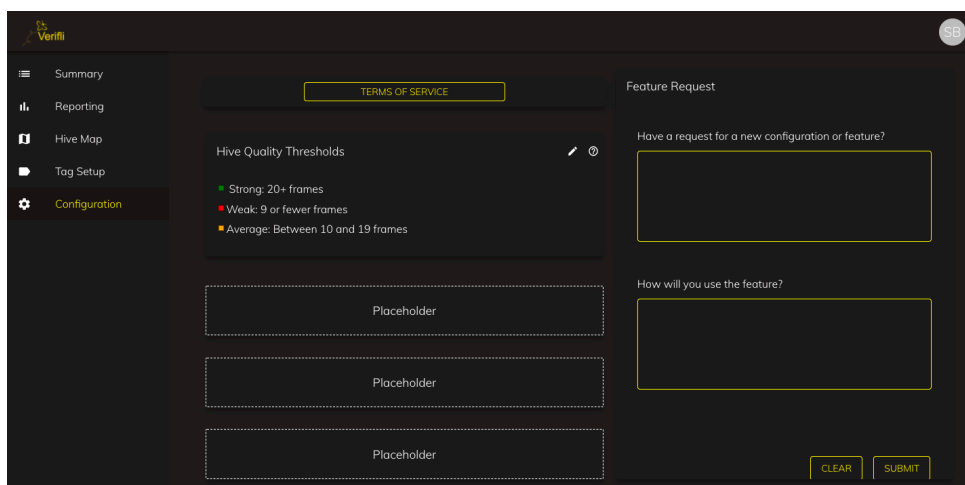
The Bee Corp team takes care of entering your tag data before pollination season using information you provide for no additional cost. You can use this page to confirm that the tags are set up correctly. If you see any issues, please let us know and we will correct it.

CONFIGURATION

- Customize hive strength thresholds
 - Default thresholds:
 - Strong:** 12 frames and stronger
 - Average:** 5 to 11 frames
 - Weak:** 4 frames and weaker

What to use this page for

This page allows you to create custom thresholds for strong, average and weak hive strength as they appear on your dashboard to better align with your goals. If you want your hives at 10 frames or more to appear **green** on your dashboard, click the **pencil icon**, click the dropdown list next to “Strong,” select the number 10 and click the check mark in the top right.



The screenshot shows the Verifli Configuration page. On the left is a sidebar with navigation links: Summary, Reporting, Hive Map, Tag Setup, and Configuration (highlighted). The main content area has a 'TERMS OF SERVICE' button at the top. Below it is the 'Hive Quality Thresholds' section, which includes a list of default thresholds: Strong: 20+ frames (green), Weak: 9 or fewer frames (red), and Average: Between 10 and 19 frames (yellow). There are three dashed boxes labeled 'Placeholder' below this list. To the right is a 'Feature Request' section with two text input fields: 'Have a request for a new configuration or feature?' and 'How will you use the feature?'. At the bottom right of the Feature Request section are 'CLEAR' and 'SUBMIT' buttons.

Our pitch is simple enough. Growers and beekeepers have a lot at stake during pollination. We aim to help growers understand what they're paying for and help beekeepers show why they deserve the big bucks. With the Verifli Dashboard, you have the ability to prove your results.



CONTACT US



8 p.m. – 8 a.m. (Eastern)
Contact Rob Long
(219) 713-6044
rob.long@thebeecorp.com



8 a.m. – 8 p.m. (Eastern)
Contact Michael Meyer
(765) 571-0449
mike.meyer@thebeecorp.com



Call us at **(559) 314-2030** or visit **thebeecorp.com** today.